

## EUROCLAD SELEKTA CLADDING

### PURPOSE

EuroClad Seleakta is an external, shiplap cladding that may be installed horizontally or vertically on vertical external or internal walls. PSP Ltd also supplies proprietary flashings for use when installing EuroClad Seleakta Cladding.

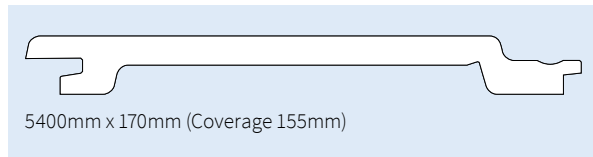
### EXPLANATION

EuroClad Seleakta is a pre-finished, composite, shiplap cladding. It is manufactured from processed timber fibres, binding agent and wood preservative to ensure durability, and pest and rot resistance.

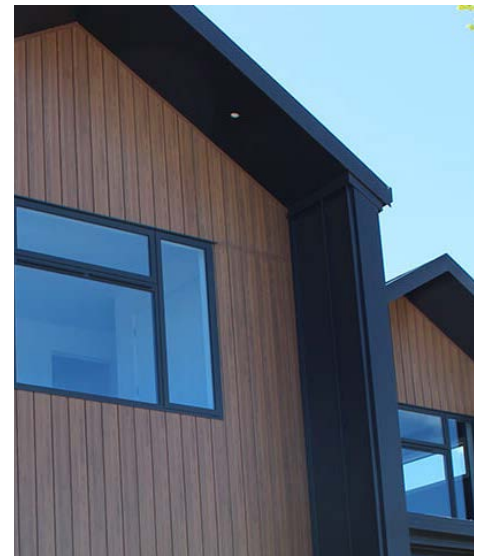
The cladding is embossed in a variety of realistic timber grains and colours.

EuroClad Seleakta is available in the following sizes:

- Thickness (mm): 18
- Length (mm): 5400
- Width (mm):
  - Cover 155
  - Sheet 170.



EuroClad Seleakta is manufactured in Germany by Werzalit. Only wood product from forests certified PEFC (Program for the Endorsement of Forest Certification) is used. This ensures that the manufacturing process is sustainable with regard to economic, ecological and social standards.



For further assistance please contact:

- ☎ 09 415 2809
- ✉ [euroclad@psp.co.nz](mailto:euroclad@psp.co.nz)
- 🌐 [www.euroclad.co](http://www.euroclad.co)



### SCOPE AND LIMITATIONS OF USE

Scope	Limitations
<b>Location</b> In any wind zone as defined in NZS 3604:2011, or calculated design wind pressure up to 2.5kPa (ULS). In all climate zones as defined by NZS 3604:2011. On buildings located 1m or more from the relevant boundary.	Design wind speed is limited by the EuroClad Seleakta design load span tables (refer to: <a href="http://www.euroclad.co">www.euroclad.co</a> ). For use in microclimate, consult with PSP technical staff.
<b>Building</b> On timber or light steel structural framing.  In conjunction with a primary structure that complies with the NZ Building Code or where the designer has established that the existing structure is suitable for the intended building work. As an external wall cladding.	A thermal break is required where EuroClad Seleakta is used in conjunction with light steel framing. A maximum building height of 10 m.  A drained and ventilated cavity is always required unless the building is unlined or Importance Level 1, in which case, the EuroClad Seleakta may be direct fixed as per E2/AS1. Flexible and rigid building underlays and fixings must meet the performance characteristics in Table 23, E2/AS1. PSP Ltd supplied flashings must be used.

### USEFUL INFORMATION

For information on the design, installation and maintenance of EuroClad Seleakta Cladding and for our warranty refer to [www.euroclad.co](http://www.euroclad.co)

### OTHER CERTIFICATIONS HELD BY PSP

- PEFC certified (Werzalit) manufacturing process

## PERFORMANCE CLAIMS

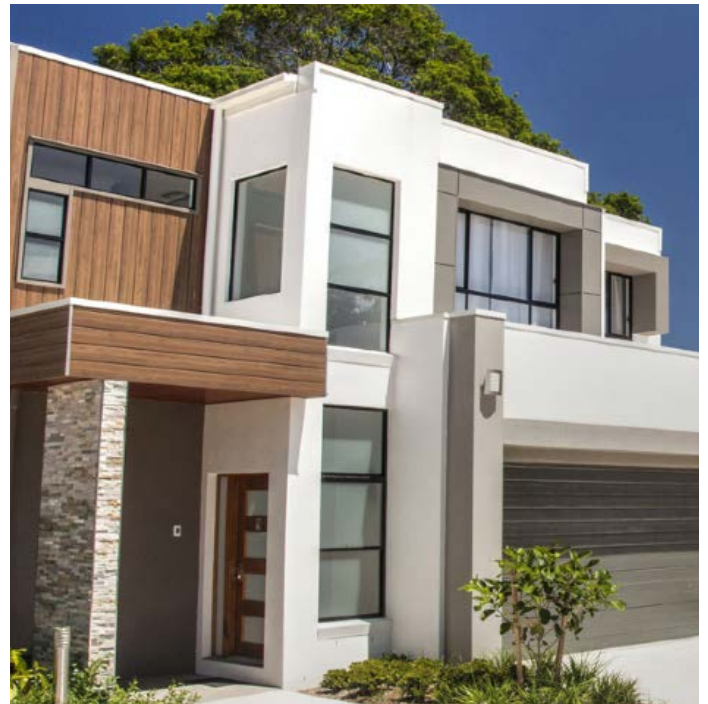
If designed, installed and maintained in accordance with all of the PSP Ltd requirements, the EuroClad Seleкта Cladding will comply with or contribute to compliance with the following performance claims

N.Z. Building Code clauses	BASIS OF COMPLIANCE	
	Compliance statement <sup>1</sup>	Demonstrated by
<b>B1 Structure</b> B1.3.1, B1.3.2, B1.3.3 (a, h, j, m, q)	ALTERNATIVE SOLUTION	<ul style="list-style-type: none"> <li>➤ Tested to EN 310 which specifies elasticity in bending and bending strength for wood-based panels</li> <li>➤ Tested to E2/VM1 which tested the performance of the weatherboards up to 2.5kPa</li> </ul>
<b>B2 Durability</b> B2.3.1 (b)	ALTERNATIVE SOLUTION	<ul style="list-style-type: none"> <li>➤ TNO Science UV testing, July 2006</li> <li>➤ Tested to EN 317 which demonstrates the product has low water absorption</li> </ul>
<b>E2 External Moisture</b> E2.3.2, E2.3.3, E2.3.5, E2.3.7 (a, b, c, d)	VERIFICATION METHOD E2/VM1	<ul style="list-style-type: none"> <li>➤ Tested for water penetration by Façade Lab</li> </ul>
<b>F2 Hazardous Building Materials</b> F2.3.1	ALTERNATIVE SOLUTION	<ul style="list-style-type: none"> <li>➤ When manufactured, EuroClad Seleкта is inert</li> </ul>

1. The Compliance Statement is the pass holder's statement that they have met their obligations under s14G(2) of the Building Act 2004.

## INFORMATION RELIED UPON TO PREPARE THIS PASS™

- Façade Lab (2017) Report No. 17-17. *Testing of horizontal and vertical Euroclad re-constituted timber weatherboard cladding system in accordance with E2/VM1, and portions of AS/NZS 4284.*
- UNE EN 310:1994 (1994) *Wood-based panels - Determination of modulus of elasticity in bending and of bending strength*
- BS EN 317:1993 (1993) *Particleboards and fibreboards. Determination of swelling in thickness after immersion in water*
- EuroClad (2018) *Installation Instructions: EuroClad Seleкта.* Retrieved from <https://www.euroclad.co/downloads/EUROCLAD%20NZ%20TESTING%20INSTRUCTIONS%20MAY%202018.PDF>
- TNO Science and Industry (2006) TC-RAP-06-20831/gge. *Determination of the UV-resistance of a sample of HPL sheet, manufacturer Resopal GmbH*



VERSION:

.....

Note: Uncontrolled in printed format.

NAME:

.....

POSITION:

.....

DATE:

.....

Vaughan Brown

Business Unit Manager  
– Building Brands

Signed on behalf of Company PSP:

By signing this pass™ the signatory confirms that, in respect of the subject of this pass™, the company has met their s14G obligations under the Building Act 2004.



PSP, 320 Rosedale Road, Albany 0632 > [euroclad@psp.co.nz](mailto:euroclad@psp.co.nz) > 09 415 2809 > [www.euroclad.co](http://www.euroclad.co)

This Product Assurance Supplier Statement (pass™) has been prepared by TBB in accordance with MBIE PTS guidelines and the recommendations of s9.2, Determination No. 2019-011 (issued 12 April 2019). TBB is ISO9001:2016 certified. Copyright © 2017, The Building Business Limited (TBB). All rights reserved.